

# Offshore Valves

## Type 05719 - Check Valve, ASME B16.5 Flanges



### Cryogenic-Check Valves, class 150

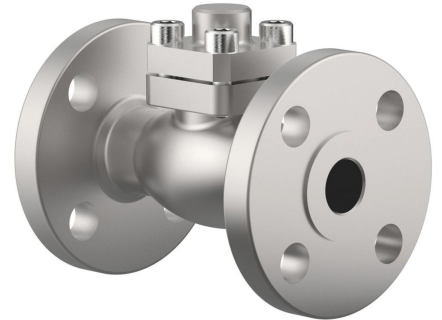
Stainless steel body and cap  
with spring, opening pressure ca. 0.1 bar  
"cleaned and degreased for oxygen service"

#### Part No. 05719.X.0041

Flanged connection acc. to ASME B16.5 class 150  
Disc seal: PTFE / Carbon filled (25%)

#### Part No. 05719.X.0051

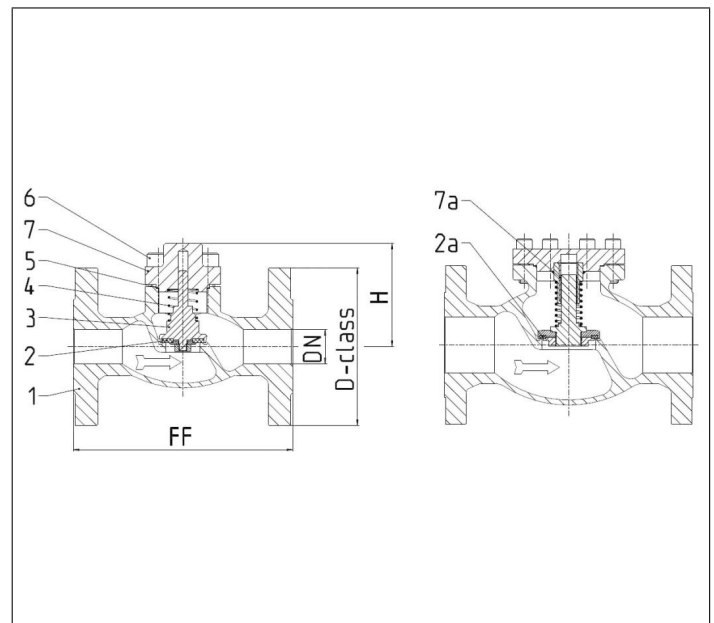
Flanged connection acc. to ASME B16.5 class 150  
Disc seal: PTFE



### Applications:

Approved for air gases, vapours and cryogenic liquefied gases incl. LNG.  
Working temperature: -255°C / -427°F (18K) up to +120°C / +248°F (393K)

| Materials               | DIN EN                     | ASTM              |
|-------------------------|----------------------------|-------------------|
| 1 Body                  | 1.4409                     | A 351 CF3M        |
| 2 Valve seal up to DN50 | PTFE / Carbon filled (25%) |                   |
| 2a Valve seal from DN65 | PTFE                       |                   |
| 3 Disc                  | 1.4404                     | A 276 Grade 316L  |
| 4 Spring                | 1.4571                     | A 313 Grade 316Ti |
| 5 Bonnet gasket         | Graphite                   |                   |
| 6 Bolts                 | 1.4571/A4                  | similar A 194 B8T |
| 7 Cap                   | 1.4404                     | A 276 Grade 316L  |
| 7a Bush from DN65       | PTFE                       |                   |



| Type 05719 - Standard design                 | Technical data    |      |      |      |      |      |      |       |       |       |
|--|-------------------|------|------|------|------|------|------|-------|-------|-------|
| Nominal size                                 | DN                | 15   | 20   | 25   | 40   | 50   | 65   | 80    | 100   | 150   |
| Dimension code - Flange ASME B16.5 class 150 | .X.               | 0400 | 0600 | 1000 | 1400 | 2000 | 2400 | 3000  | 4000  | 6000  |
| Flange-Ø                                     | D-class           | 90   | 100  | 110  | 125  | 150  | 180  | 190   | 230   | 280   |
| Face-to-face dimension                       | FF                | 140  | 150  | 160  | 200  | 230  | 290  | 310   | 350   | 577   |
| Height                                       | H                 | 70   | 75   | 75   | 95   | 90   | 125  | 150   | 165   | 215   |
| Weight                                       | ca. kg            | 2.9  | 3.4  | 4.4  | 6.4  | 11.6 | 19.2 | 25.2  | 39.8  | 81.5  |
| Kvs-Value                                    | m <sup>3</sup> /h | 4.3  | 6.7  | 11.5 | 22.6 | 37.1 | 71.1 | 104.0 | 170.0 | 350.0 |
| Cv-Value                                     | gal/min           | 5.0  | 7.8  | 13.4 | 26.3 | 43.2 | 82.9 | 121.3 | 198.3 | 408.4 |

Dimensions in mm. Leakage rates will be provided on request