

# Changeover Valves

## Type 06900 - Bursting disc brass



### for Cryogenic Diverter Valves

burst pressure range: 4,0 bar (58.0 psi) - 52,0 bar (754.0 psi)

indicated burst pressure at burst temperature +20°C (68°F)

burst pressure tolerance:  $\pm 5\%$

"cleaned and degreased for oxygen service"

#### Part No. 06900.0400.00XX.XX

male thread G1/2 acc. to ISO 228/1

#### Part No. 06900.0400.50XX.XX

male thread 1/2" NPT acc. to ANSI B 1.20.1

XX.XX = Code for burst pressure

Example:

burst pressure **5,20** bar - 06900.0400.0005.20

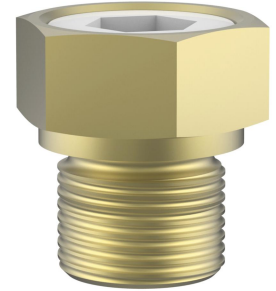
burst pressure **24,00** bar - 06900.0400.0024.00

Calculation bar in psi: 1,0 bar = 14,503 psi (7,20 bar = 104,4 psi)

Available options - on request only:

- other thread sizes
- other burst pressures

Working temperature: -196°C (77K) up to +120°C (393K)



Materials	DIN EN	ASTM
1 Body	CW614N	B 283 UNS C38500
2 Burst disc	1.4401	AISI 316
3 Ring	CW614N	B 283 UNS C38500

Part No. (G-thread)	Standard-burst pressures
06900.0400.0005.20	5.2 bar / 75.4 psi
06900.0400.0007.20	7.2 bar / 104.4 psi
06900.0400.0014.00	14.0 bar / 203.0 psi
06900.0400.0016.50	16.5 bar / 239.3 psi
06900.0400.0020.20	20.2 bar / 292.9 psi
06900.0400.0024.00	24.0 bar / 348.0 psi
06900.0400.0025.08	25.08 bar / 363.7 psi
06900.0400.0027.00	27.0 bar / 391.5 psi
06900.0400.0046.00	46.0 bar / 667.0 psi

Part No. (NPT-thread)	Standard-burst pressures
06900.0400.5005.20	5.2 bar / 75.4 psi
06900.0400.5007.20	7.2 bar / 104.4 psi
06900.0400.5014.00	14.0 bar / 203.0 psi
06900.0400.5017.00	17.0 bar / 246.5 psi
06900.0400.5020.20	20.2 bar / 292.2 psi
06900.0400.5024.00	24.0 bar / 348.0 psi
06900.0400.5027.00	27.0 bar / 391.5 psi
06900.0400.5032.00	32.0 bar / 464.1 psi
06900.0400.5046.00	46.0 bar / 667.0 psi

Type 06900	Technical data	
Nominal size	<b>GW</b>	<b>1/2</b>
Height G-Thread	H	33,0
Height NPT-Thread	H	37,5
Length G-Thread	L	15,5
Length NPT-Thread	L	20,0
Orifice	d <sub>0</sub>	13,0
Wrench size across flats	S	30
Weight	ca. kg	0,1
Kvs-Value	m <sup>3</sup> /h	11,0
Cv-Value	gal/min	13,1

Dimensions in mm.

