

# Spare Parts for Valves and Fill Cluster

## Type 55318, Type 55317 - Handwheel



### for Cryogenic Globe Valves

Handwheels made out of aluminium or stainless steel

Nominal size Globe Valve	Colour	Part No. (aluminium)	Part No. (stainless steel)
DN10 - DN25	white (RAL 9010)	55318.0001.0402	55318.0016.0783
DN32 - DN50	white (RAL 9010)	55318.0002.0402	55318.0017.0783



Nominal size Globe Valve	Colour	Part No. (aluminium)	Part No. (stainless steel)
DN65	silver (natural)	55317.0021.0402	55317.0118.0783
DN80	silver (natural)	55317.0022.0402	55317.0117.0783
DN100	silver (natural)	55317.0068.0402	55317.0119.0783
DN150	silver (natural)	55317.0016.0402	55317.0120.0783
DN200	silver (natural)	55317.0106.0402	55317.0122.0767



### for Cryogenic Bellow sealed Valves

Nominal size Bellow sealed Valve	Colour	Part No. (aluminium)	Part No. (stainless steel)
DN10 - DN50	silver (natural)	55317.0029.0402	55317.0123.0783



### for Cryogenic Gate Valves

Nominal size Gate Valve	Colour	Part No. (aluminium)
DN25 - DN40	white (RAL 9010)	55318.0002.0402
DN50 - DN80	silver (natural)	55317.0029.0402
DN100	silver (natural)	55317.0020.0402

### Handwheels (available colours) made of aluminium for Cryogenic Globe Valves DN10 - DN50

Nominal size	Colour	Part No.
DN10 - DN25	silver (natural)	55318.0016.0402
DN32 - DN50	silver (natural)	55318.0017.0402



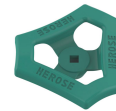
Nominal size	Colour	Part No.
DN10 - DN25	red (RAL 3000)	55318.0004.0402
DN32 - DN50	red (RAL 3000)	55318.0005.0402



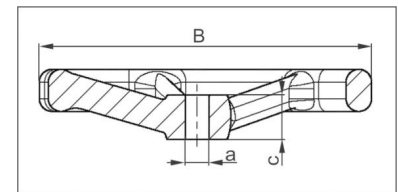
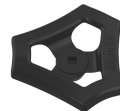
Nominal size	Colour	Part No.
DN10 - DN25	blue (RAL 5015)	55318.0007.0402
DN32 - DN50	blue (RAL 5015)	55318.0008.0402



Nominal size	Colour	Part No.
DN10 - DN25	green (RAL 6005)	55318.0010.0402
DN32 - DN50	green (RAL 6005)	55318.0011.0402



Nominal size	Colour	Part No.
DN10 - DN25	black (RAL 9011)	55318.0013.0402
DN32 - DN50	black (RAL 9011)	55318.0014.0402



Type 55318	Technical Data				Type 55317								
		.0001.0402	.0002.0402										
		.0004.0402	.0005.0402										
		.0007.0402	.0008.0402										
		.0010.0402	.0011.0402		.0016.0402	.0020.0402	.0021.0402	.0022.0402	.0029.0402	.0068.0402	.0106.0402		
		.0013.0402	.0014.0402		.0120.0783		.0118.0783	.0117.0783	.0123.0783	.0119.0783	.0122.0767		
		.0016.0402	.0017.0402										
		.0016.0783	.0017.0783										
Handwheel-Ø	B	100	125		360	200	200	250	150	315	630		
Square	a	7	10		15	12	10	10	10	12	27		
Hub height	c	15	19,5		35,0	30,0	20,5	20,0	19,0	33,0	56,0		
Weight	ca. kg	0,1	0,15		3,4	0,85	0,8	0,15	0,35	2,5	9,7		

Dimensions in mm.